



# GAT MONTHLY MEMBERSHIP PROGRESS REPORT

Results as of: 4/30/2023

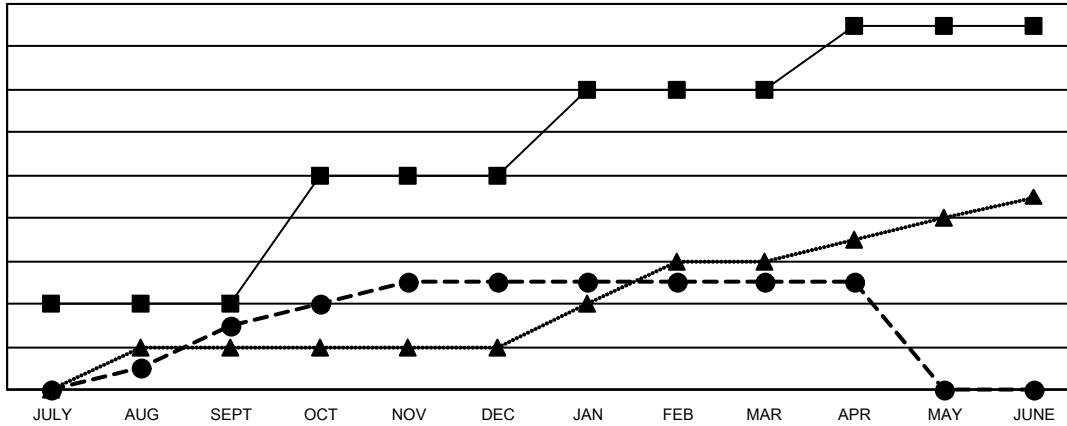
Multiple District 35

LOCATION: FLORIDA

Clubs			
RESULTS FOR 2022-2023			
QUARTER	NEW CLUB GOAL	NEW CLUBS	DROPPED CLUBS
JULY/AUG/SEPT	4	3	3
OCT/NOV/DEC	6	2	7
JAN/FEB/MAR	4	0	4
APR/MAY/JUNE	3	0	0

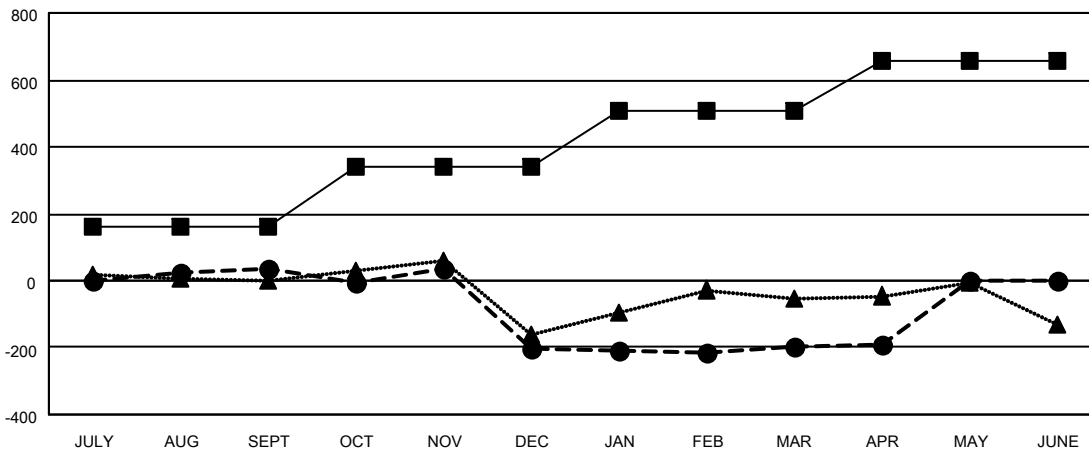
Members			
RESULTS FOR 2022-2023			
QUARTER	MEMBER GROWTH NET GOAL	MEMBER GROWTH ACTUAL	DROPPED MEMBERS ACTUAL (including transfers)
JULY/AUG/SEPT	160	309	221
OCT/NOV/DEC	180	223	443
JAN/FEB/MAR	170	266	203
APR/MAY/JUNE	145	71	56

GOALS AND ACTUAL NEW CLUBS CUMULATIVE



- - CURRENT YEAR GOALS FOR NEW CLUBS
- - CURRENT YEAR ACTUAL NEW CLUBS
- ▲ - LAST YEAR ACTUAL NEW CLUBS

GOALS AND ACTUAL MEMBERS CUMULATIVE



- - MEMBER GROWTH NET GOAL
- - MEMBER GROWTH ACTUAL
- ▲ - LAST YEAR MEMBERSHIP ACTUAL

DROPPED CLUBS: 14	
<b>DROPPED MEMBERS</b>	
DECEASED	73
CLUB CANCELLED	98
OTHER	754
<b>TOTAL</b>	<b>925</b>

127 CLUBS OF 220 ADDED 1 OR MORE NEW MEMBERS

[CLICK HERE FOR CUMULATIVE MEMBERSHIP DATA](#)

GENDER DISTRIBUTION	
MALE	2,493 (51.17%)
FEMALE	2,376 (48.77%)
NON BINARY	1 (0.02%)
PREFER NOT TO ANSWER	2 (0.04%)
TOTAL FAMILY UNIT MEMBERS	1,167
FAMILY MEMBERS PAYING HALF DUES	594